

TAD 6 to TAD 8 Upgrade Instructions

Introduction

When upgrading from TAD 6 to TAD 8, your well data will not be available in TAD 8 automatically. This document will walk you through the steps to upgrade to TAD 8 and make your well data available.

Upgrade Process

There are three steps to the process:

1. Install TAD 8
2. Export your wells from TAD 6
3. Import your wells into TAD 8

Each of these steps is explained below.

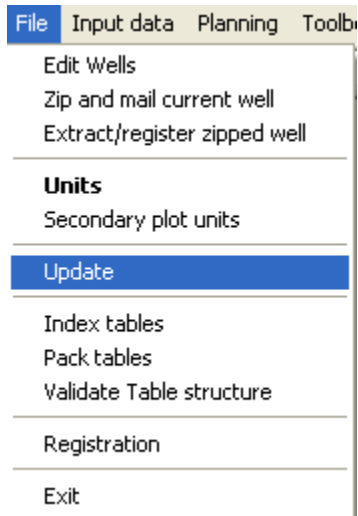
1. Install TAD 8

First, you need to install the latest version of TAD. To do this, download and run the full installer from the K&M website: <http://www.kmtechnology.com/>. The installer will walk you through the process.

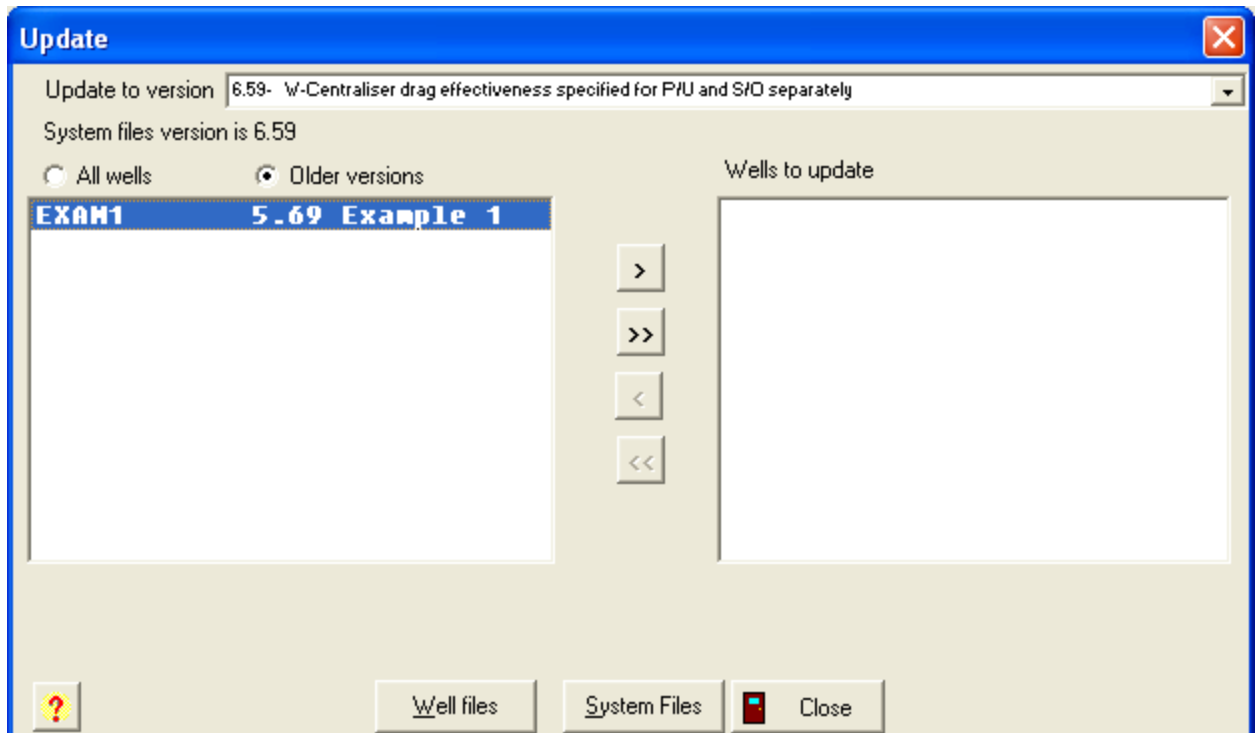
2. Export your wells

In order to get your wells into TAD 8, you will first need to export them from TAD 6. In order to do this, follow the steps below.

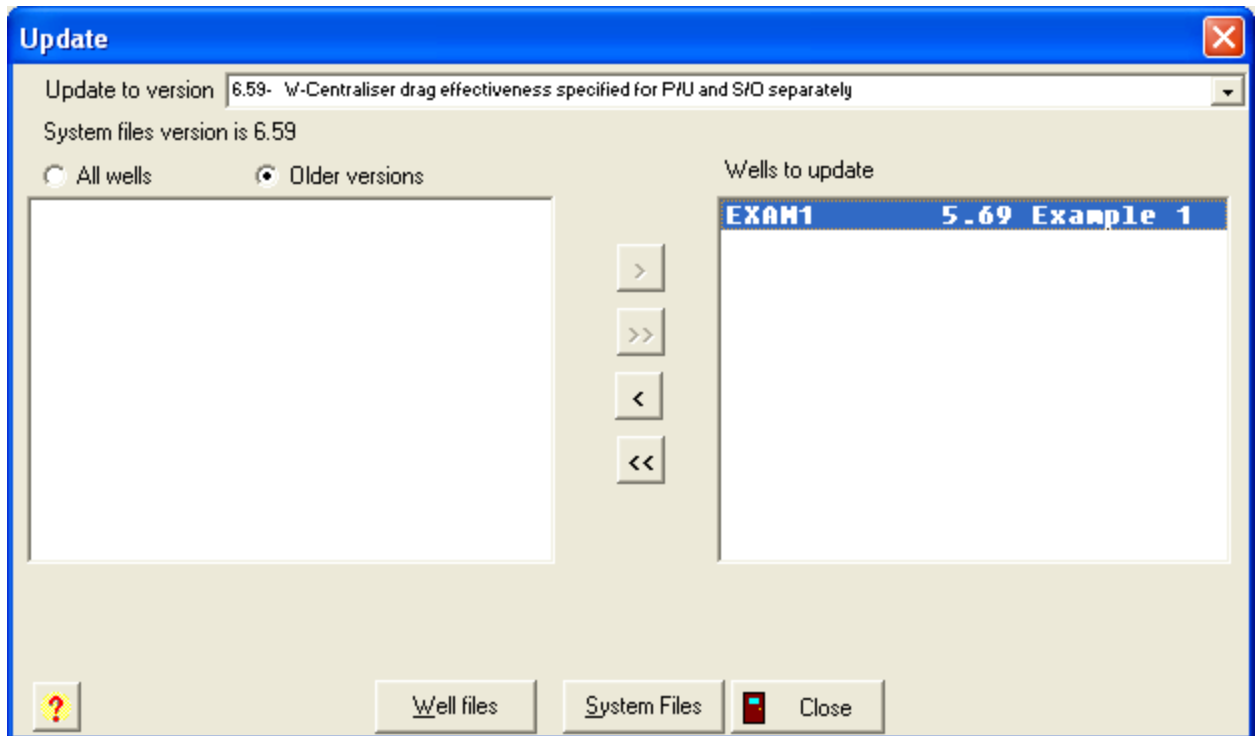
1. First you will need to update any wells that are not up to date. To do this, open TAD 6 and select Update from the File menu



2. Any wells that are not up to date will be shown in the list on the left. Select the wells you want to export.



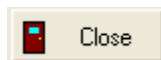
3. Press the right arrow button to move them to the list on the right.



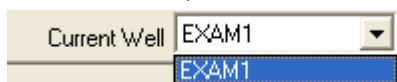
4. Press the Well files button to begin the update procedure.



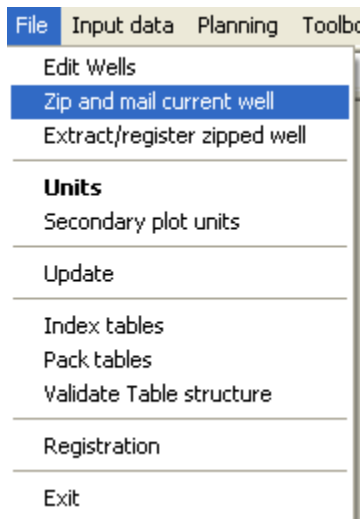
5. Once the update procedure is complete, press the Close button.



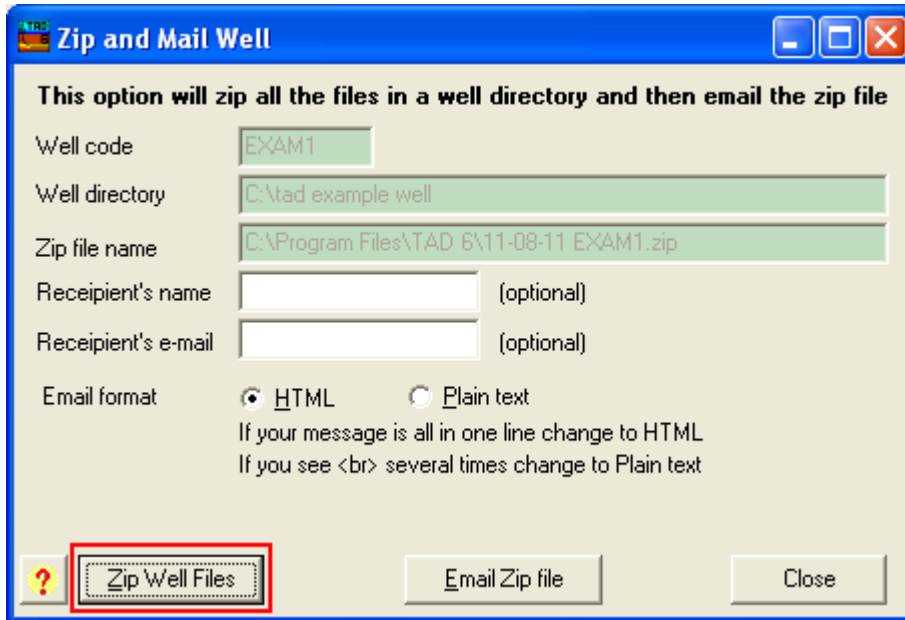
6. Select the well you would like to export in the Current Well drop down.



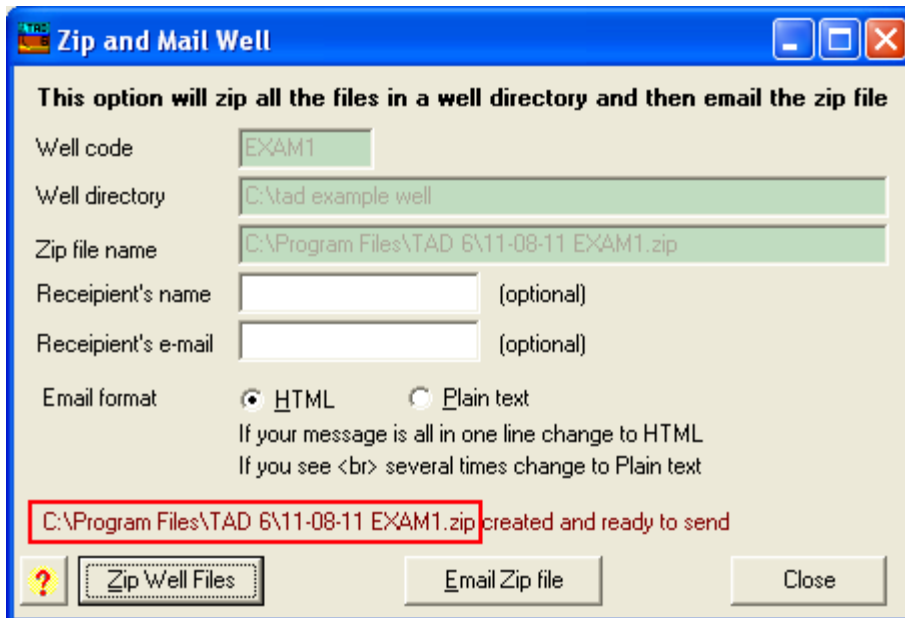
7. Select Zip and mail current well from the File menu.



8. Press Zip Well Files.



9. Once the zipping process is complete, make note of the location of the zipped well.

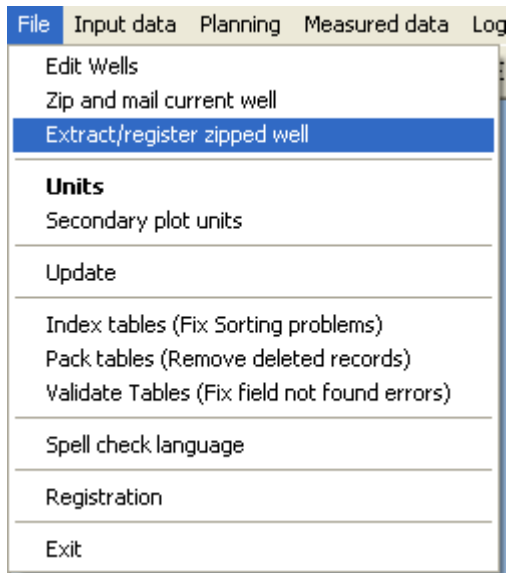


10. Repeat steps 6 through 9 for each well you wish to import into TAD 8.

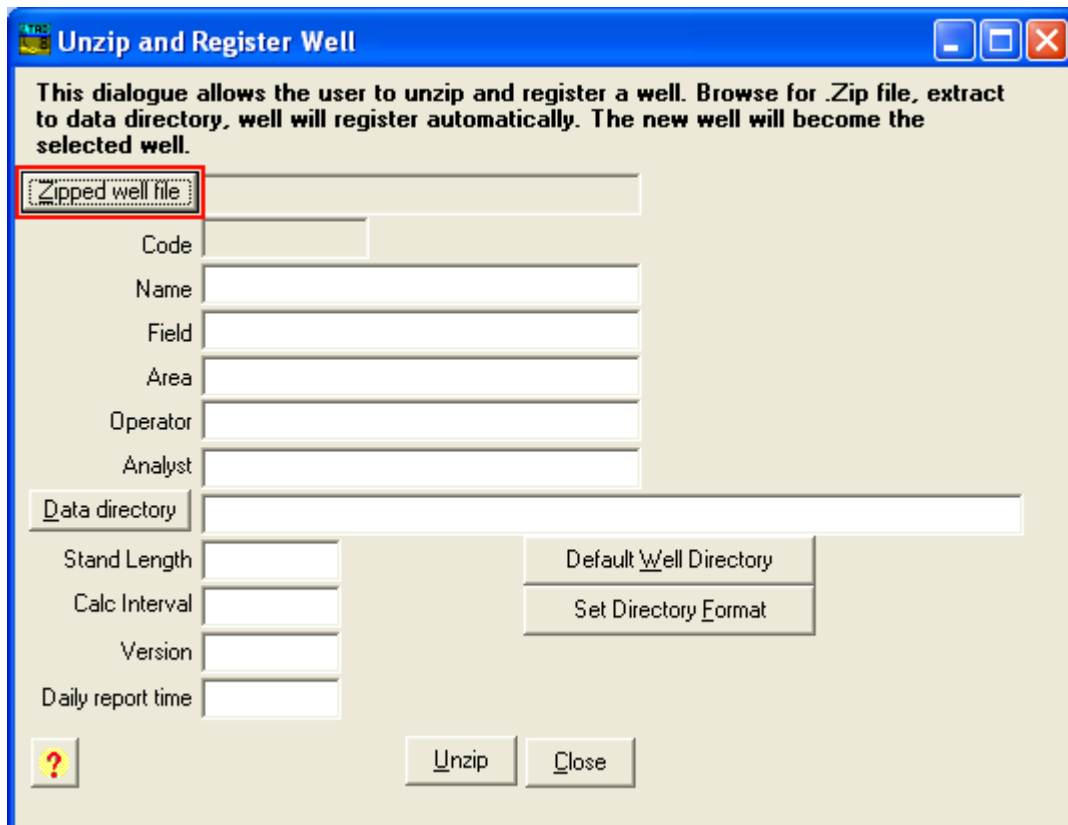
3. Import your wells

The last step in the upgrade process is to import your wells into TAD 8. To do this, follow the steps listed below.

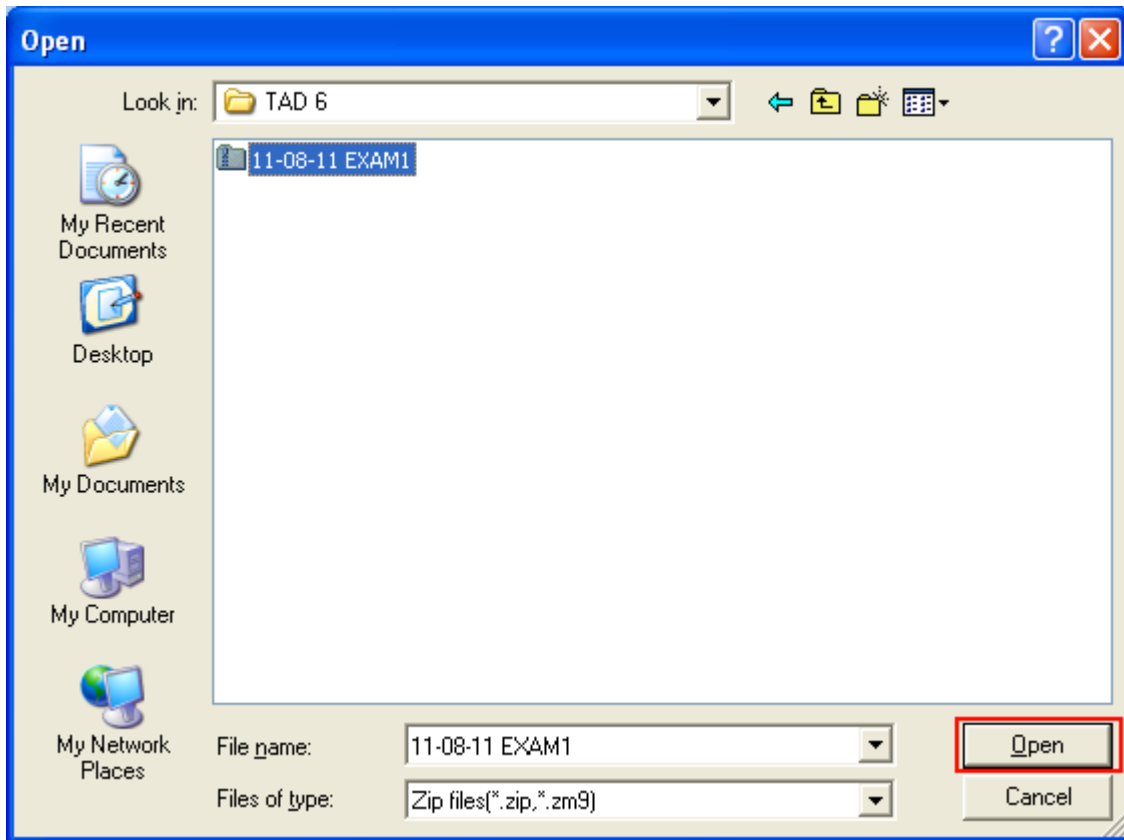
1. Run TAD 8 and select Extract/register zipped well from the File menu.



2. Press the Zipped well file button



- Find the zipped well file and press Open. (The zipped well files will be in the TAD 6 directory)



- TAD will inform you that it has unzipped the well file. Press OK.



5. Next, correct any information in the form that is not correct.

Unzip and Register Well

This dialogue allows the user to unzip and register a well. Browse for .Zip file, extract to data directory, well will register automatically. The new well will become the selected well.

Zipped well file: C:\Program Files\TAD 6\11-08-11 EXAM1.zi

Code: EXAM1

Name: Example 1

Field: Test field

Area: Test location

Operator: Test operator

Analyst: Test analyst

Data directory: C:\TAD 8\EXAM1

Stand Length: 94.5

Calc Interval: 98.43

Version: 6.59

Daily report time: 12:00

Buttons: Unzip, Close, Default Well Directory, Set Directory Format, ?

6. When all the information in the form is correct, press Unzip.

Unzip and Register Well

This dialogue allows the user to unzip and register a well. Browse for .Zip file, extract to data directory, well will register automatically. The new well will become the selected well.

Zipped well file: C:\Program Files\TAD 6\11-08-11 EXAM1.zi

Code: EXAM1

Name: Example 1

Field: Test field

Area: Test location

Operator: Test operator

Analyst: Test analyst

Data directory: C:\TAD 8\EXAM1

Stand Length: 94.5

Calc Interval: 98.43

Version: 6.59

Daily report time: 12:00

Buttons: Default Well Directory, Set Directory Format, Unzip, Close

7. TAD will inform you of how many files it extracted in to TAD 8. Press OK.

Torque and Drag

Files extracted = 553

OK

8. Next TAD will go through a validation process and inform you that the well is not valid. This is expected since this well is not in the version 8 format. We will go through the process to update it next. Press the X button to close the dialog.

Torque and Drag

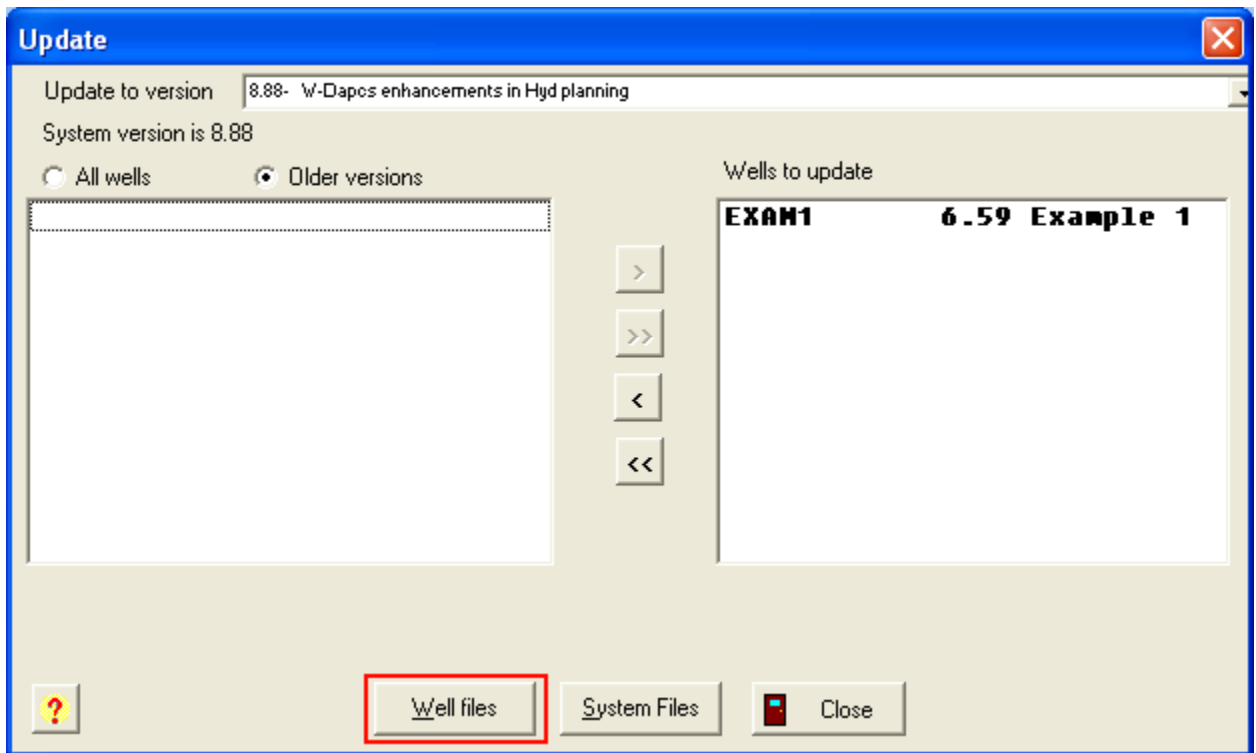
Warning - The following tables have out of date structures
Run Validate Structure to fix

- cdphdr
- celhdr
- cemcent
- cenroll
- cemscen
- colscen
- comaph

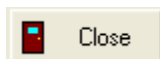
9. TAD will inform you that the well needs to be updated. Press OK.



10. Press the Well files button to update the well.



11. Once TAD finishes updating the well, press the Close button.



12. Repeat these steps for each well you need to import.

Upgrade Complete

That is it! You have now upgraded to the latest version of TAD.