

TAD 8 to TAD 8 Upgrade Instructions

Introduction

A new installer has been created for the TAD 8 application. This new installer will make it much easier to install updates to the application in the future. The first time you use the new installer, you will have to manually preserve your data. This document is intended to guide you through the process of manually preserving your data.

Upgrade Process

There are four steps to the upgrade process:

1. Backup your data
2. Uninstall TAD 8
3. Install TAD 8
4. Copy your data

Each of these steps is explained below.

1. Backup Your Data

The first thing that needs to be done as part of the upgrade is to backup your data. The process of backing up your data will be handled by a program that can be downloaded from the K&M website. Before the program can back up your files, you will need an empty directory to place the files in.

The backup program will create two new directories in the backup directory: TAD Backup and TAD Data. TAD Backup will have an exact copy of your current TAD installation directory. TAD Data will have only the files need to transfer your data to your new installation.

NOTE: If you do not use the backup application, you will have to re-enter your registration information, and it will be difficult to use your data in the new installation.

Create a Backup Directory

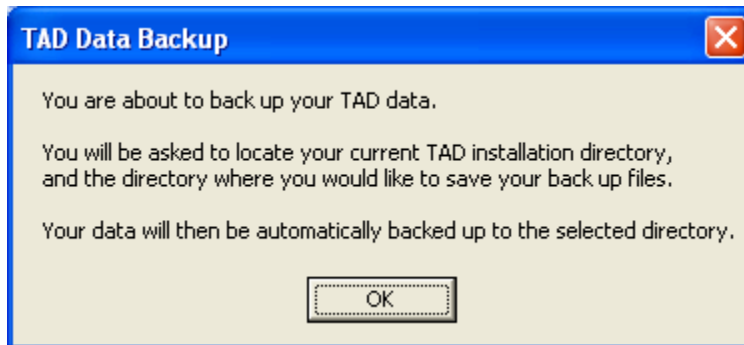
You will need a folder to store your backup data in. You can create this anywhere. If you do not know where to put this folder, you can create one on your desktop by right clicking and selecting New > Folder.

Run the Backup Program

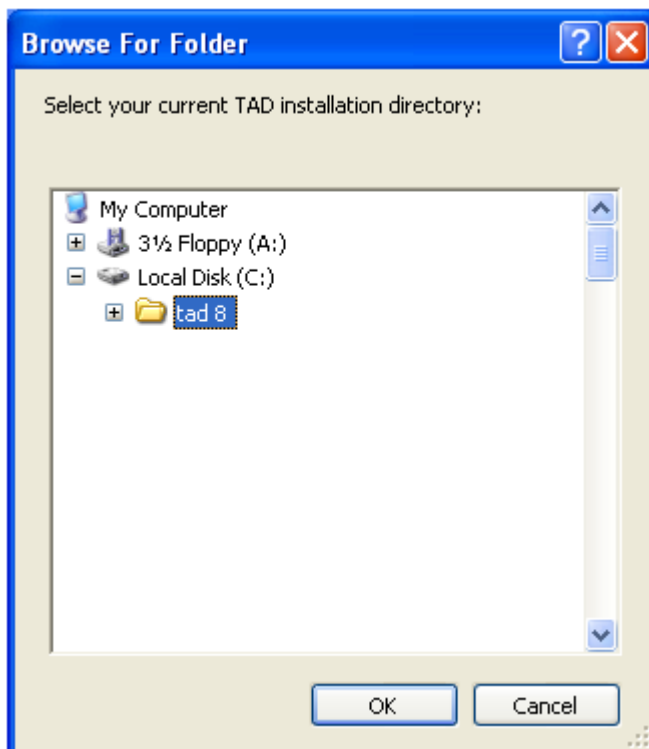
You now need to run the backup program. To do this, download and run “tadbackup.vbs” from the K&M website: <http://www.kmtechnology.com/>. This will create a backup of your current TAD installation directory including any wells and data that are in the install directory.

The steps below explain how to use the backup program:

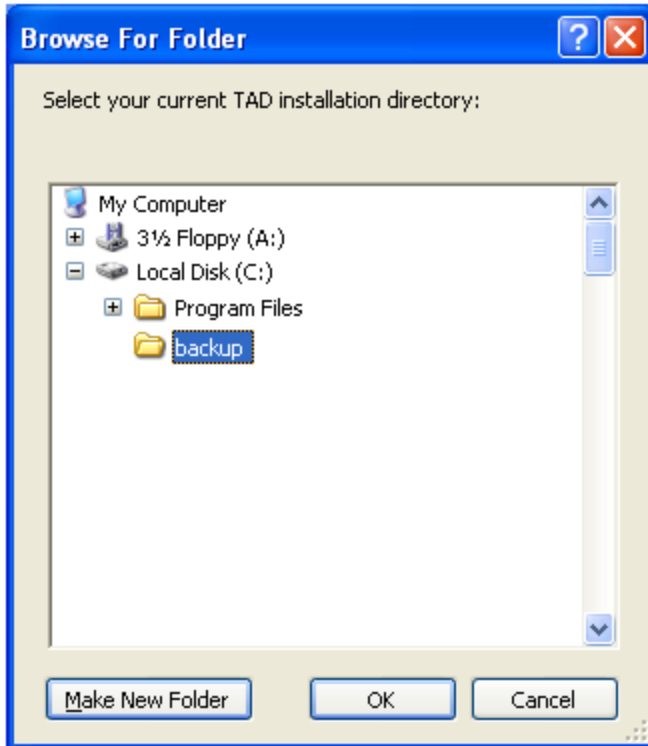
1. Press OK on the introduction dialog



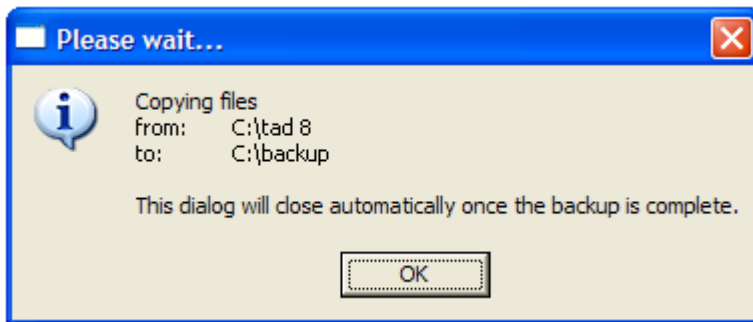
2. Locate the TAD installation directory you want to back up, and press OK



3. Locate the directory where you would like to store the backed up files, and press OK

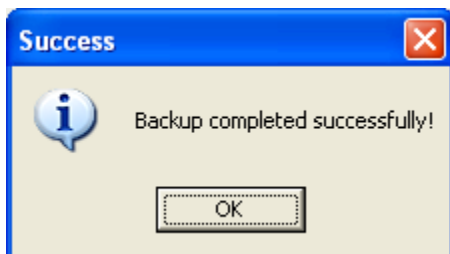


4. Wait for the files to copy (depending on the size of your wells, this may take several minutes)



Note: Closing this dialog will not stop the backup. If you close this dialog, you still need to wait for the success dialog shown in step 5.

5. Press OK on the success dialog



2. Uninstall TAD 8

You can only have one installation of TAD 8 on your system at a time, so the current version of TAD needs to be uninstalled. To do this, you will need to uninstall the program named tw8.

Windows XP

1. Start > Control Panel > Add or Remove Programs
2. Select tw8
3. Click remove

Windows Vista and Windows 7

Normal Control Panel View

1. Start > Control Panel > Programs > Uninstall a Program
2. Select tw8
3. Click uninstall

Classic Control Panel View

1. Start > Control Panel > Programs and Features
2. Select tw8
3. Click uninstall

3. Install TAD 8

Now you are ready to install the latest version of TAD. To do this, download and run the full installer from the K&M website: <http://www.kmtechnology.com/>. The installer will walk you through the process.

It is important to remember the drive you chose to install TAD 8 on. If you selected the default, it was the C:\ drive.

NOTE: You must copy your data before running the newly installed TAD.

4. Copy your data

The last thing to do is to copy your backup data into your new TAD installation. To do this, open the directory called "TAD Data" in your backup directory. Select everything in this directory and copy it to your new TAD installation. Your new TAD installation is in the TAD 8 directory on the drive where you installed TAD (by default this is the C:\ drive). Answer "Yes" to any dialogs that ask you to overwrite files.

Upgrade Complete

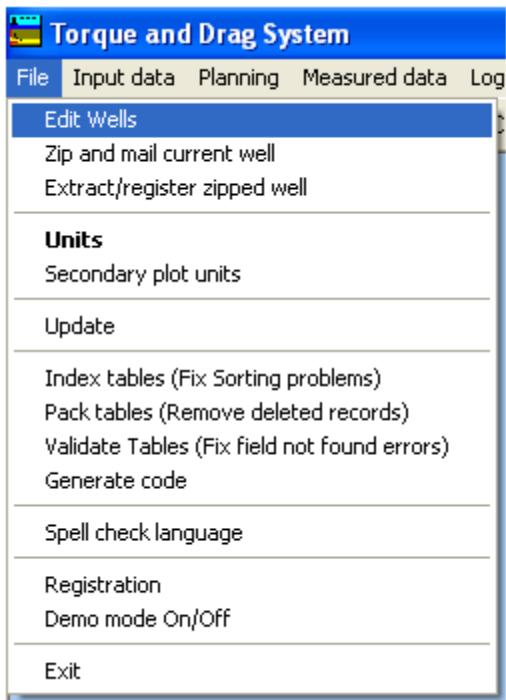
That is it! You have now upgraded to the latest version of TAD.

Troubleshooting

Existing wells do not show up in the new installation

If you have followed all of the steps in this guide, and your wells are not showing up in your new TAD installation, you will need to manually register your wells with TAD. To do this, follow the instructions below:

1. Go to File > Edit Wells.

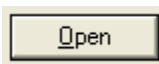


2. Press Register.



3. Locate the well directory.

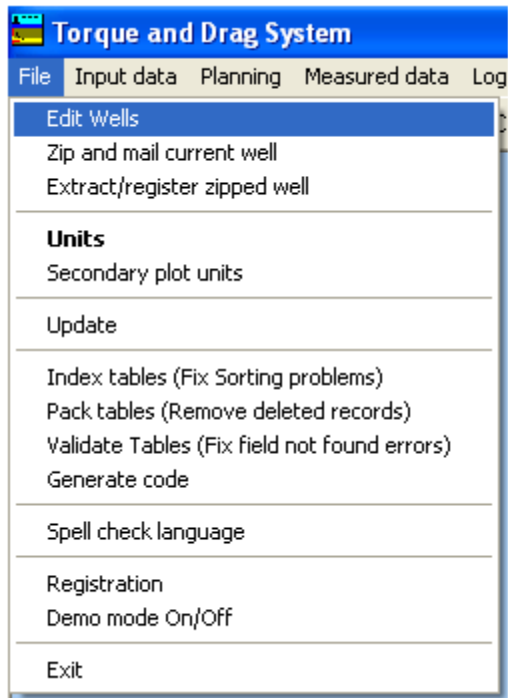
4. Press Open.



Well directory does not exist

If TAD complains that any of your well directories do not exist, you may need to manually update their location within TAD. To do this, follow the instructions below:

1. Go to File > Edit Wells.



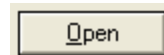
2. Select the well that needs to be updated.
3. Click the edit button.



4. Click the Data directory button.



5. Locate the well directory.
6. Press Open.



7. Press Save.

